

FINAL PLAT SECTION 9 RIDGE VIEW

OF
CHICKASAW POINT DEVELOPMENT

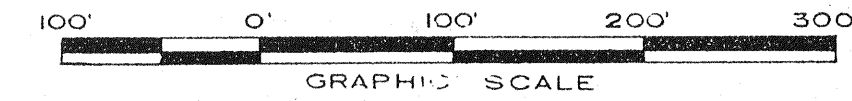
SITUATE IN
OCONEE COUNTY, SOUTH CAROLINA

PREPARED FOR

RUSSWOOD OF S.C., INC.

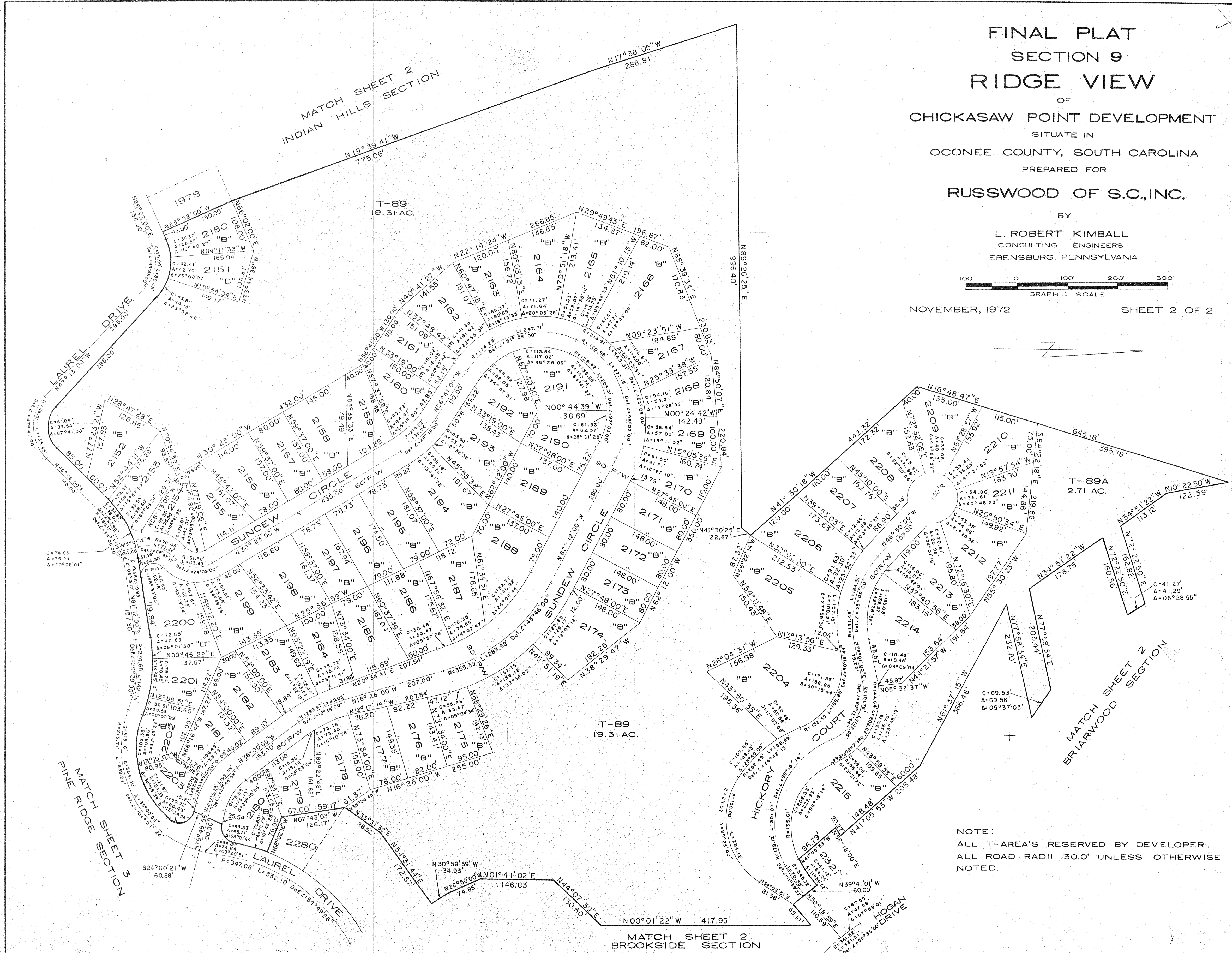
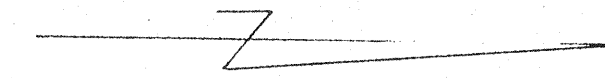
BY

L. ROBERT KIMBALL
CONSULTING ENGINEERS
EBENSBURG, PENNSYLVANIA



NOVEMBER, 1972

SHEET 2 OF 2



NOTE:
ALL T-AREA'S RESERVED BY DEVELOPER.
ALL ROAD RADII 30.0' UNLESS OTHERWISE NOTED.