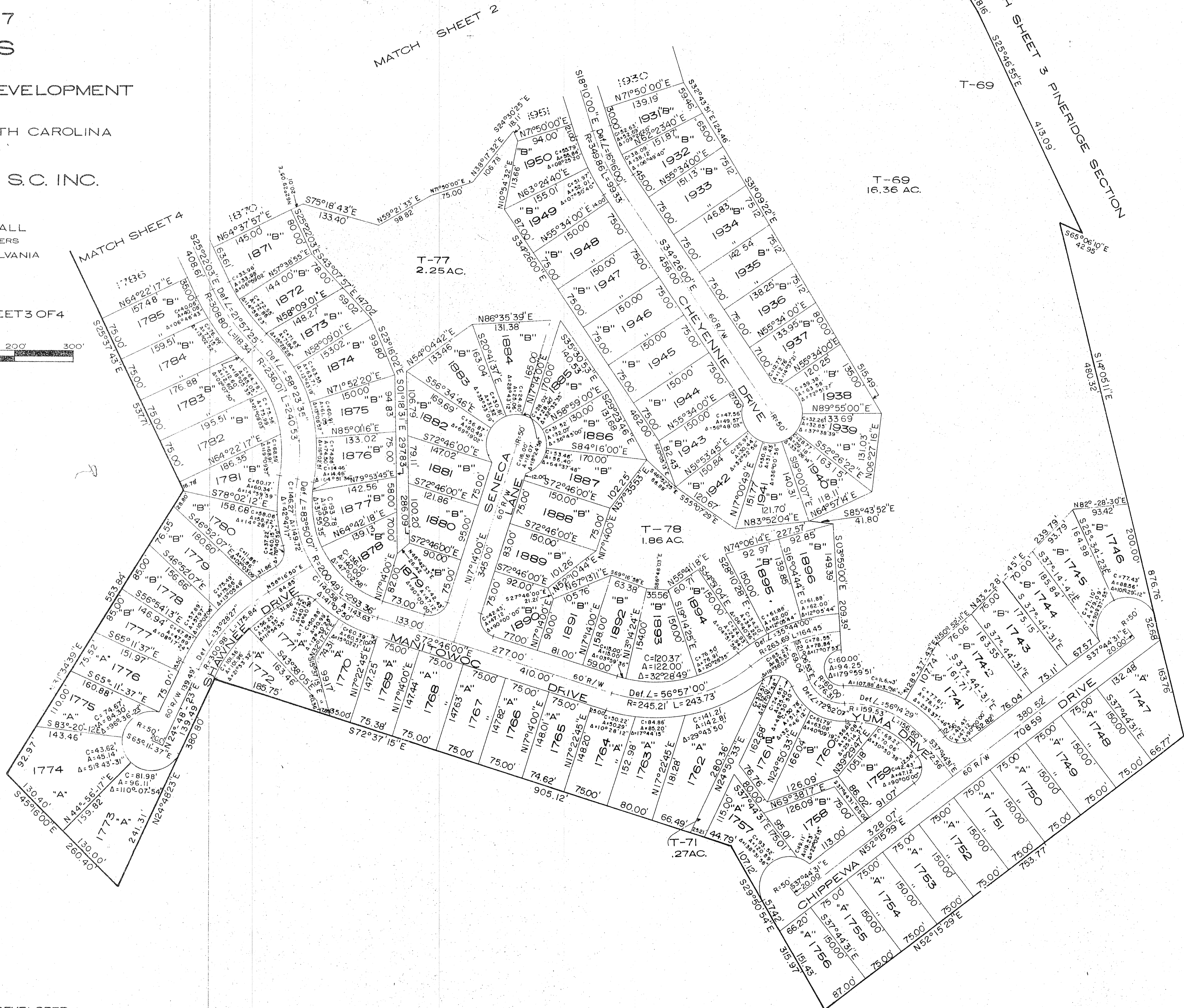
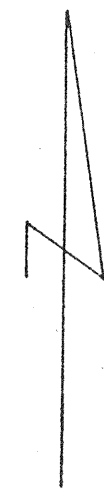
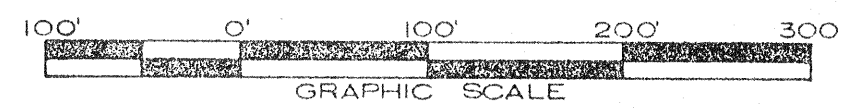


FINAL PLAT
SECTION 7
OAKHILLS
OF
CHICKASAW POINT DEVELOPMENT
SITUATE IN
OCONEE COUNTY, SOUTH CAROLINA
PREPARED FOR
RUSSWOOD OF S.C. INC.

BY
L. ROBERT KIMBALL
CONSULTING ENGINEERS
EBENSBURG, PENNSYLVANIA

JULY, 1971

SHEET 3 OF 4



NOTE: ALL T-AREAS RESERVED BY DEVELOPER
ALL ROAD RADII 30.0' UNLESS OTHERWISE NOTED.