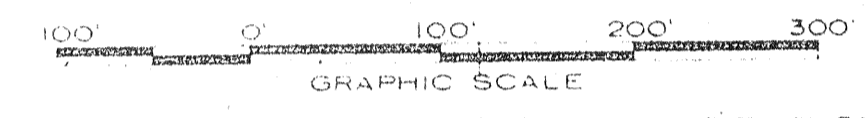


FINAL PLAT
SECTION I
TANGLEWOOD
OF
CHICKASAW POINT DEVELOPMENT
SITUATE IN
OCONEE COUNTY, SOUTH CAROLINA
PREPARED FOR
RUSSWOOD OF S.C., INC.

BY
L. ROBERT KIMBALL
CONSULTING ENGINEERS
EBENSBURG, PENNSYLVANIA

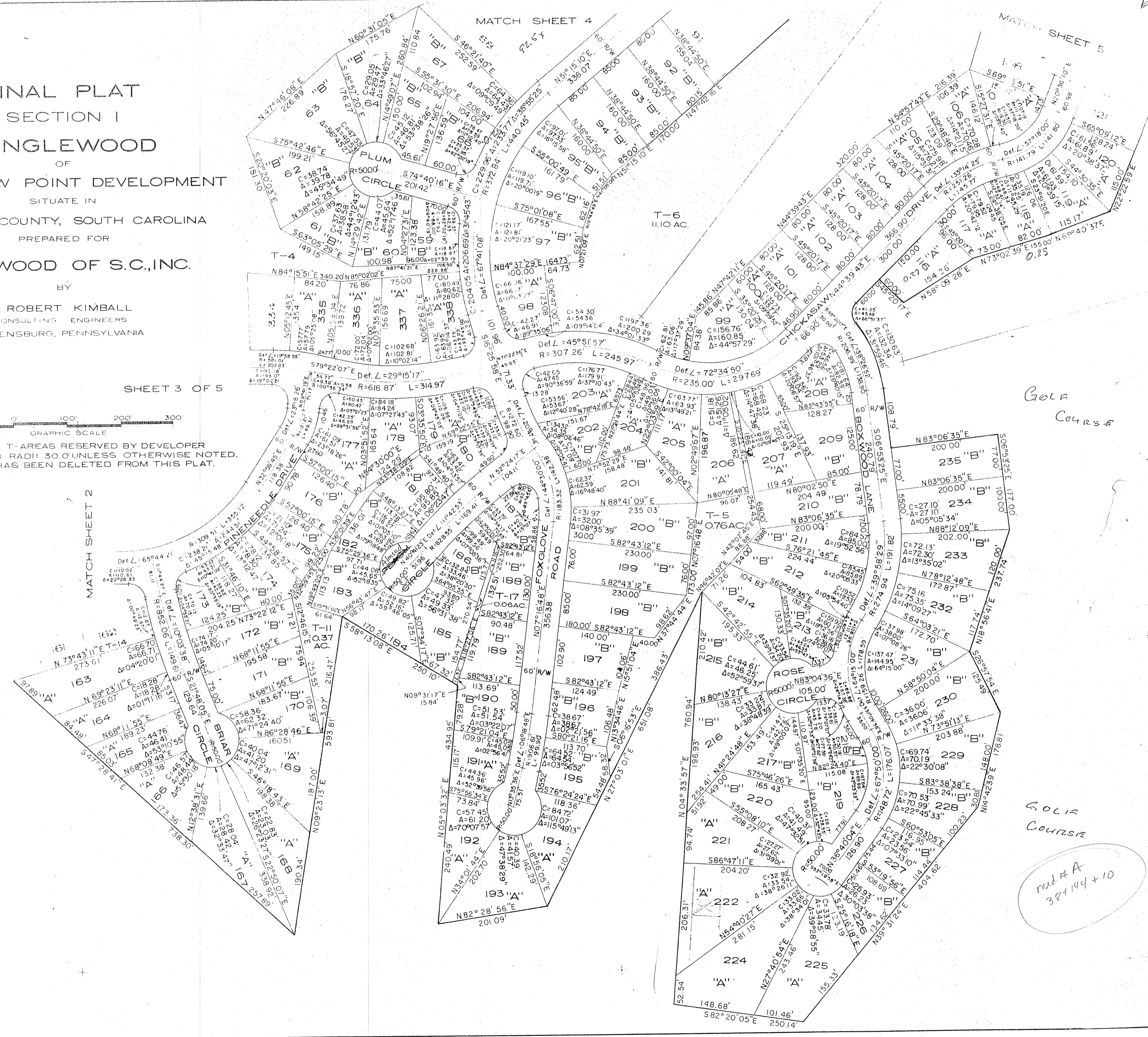
APRIL, 1971

SHEET 3 OF 5



NOTE: ALL T-AREAS RESERVED BY DEVELOPER
ALL ROAD RADII 30.0' UNLESS OTHERWISE NOTED.
LOT 223 HAS BEEN DELETED FROM THIS PLAT.

MATCH SHEET 2



GOLF COURSE

GOLF COURSE

Lot # A
397144 + 10