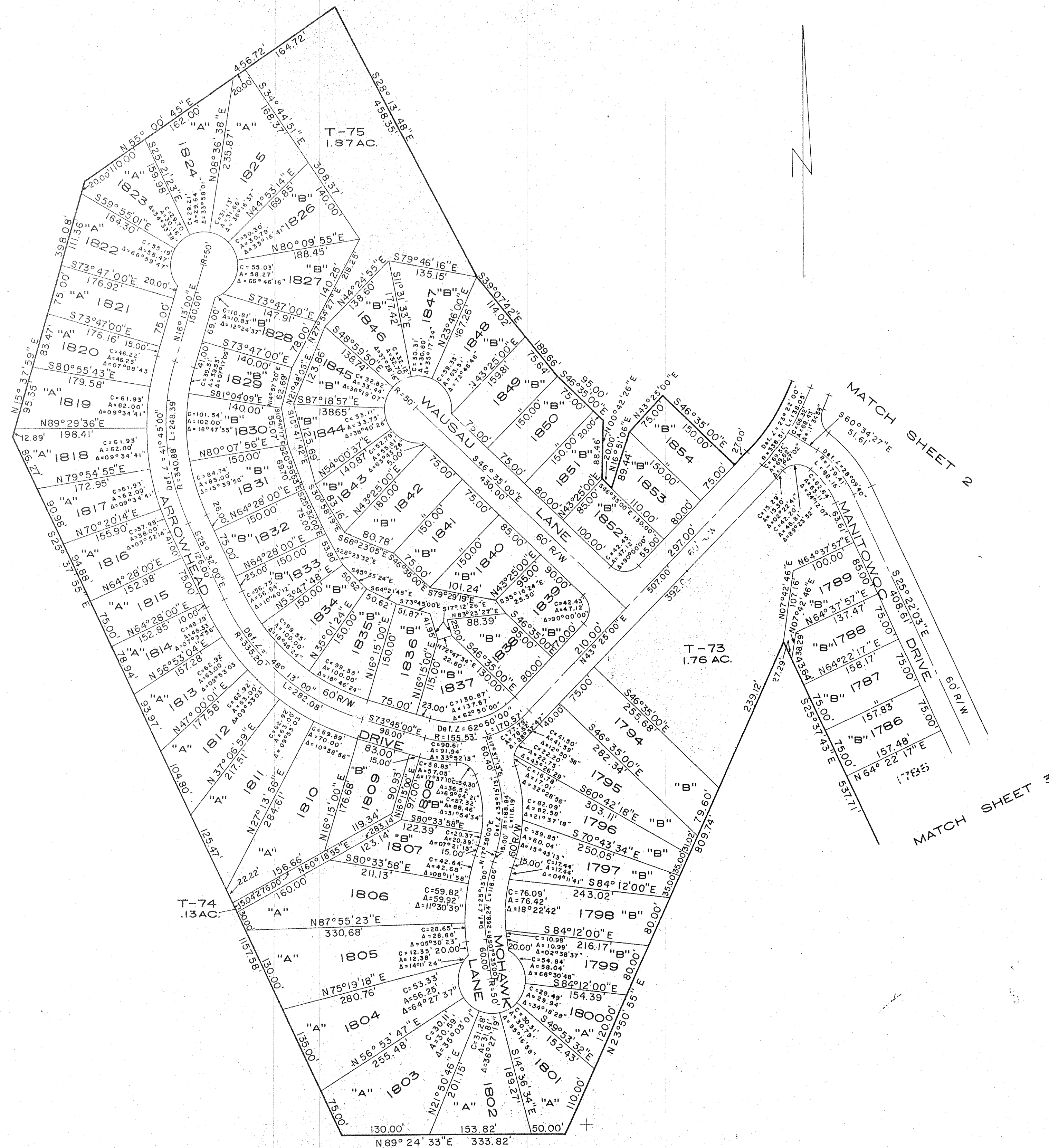


FINAL PLAT  
SECTION 7  
OAKHILLS  
OF  
CHICKASAW POINT DEVELOPMENT  
SITUATE IN  
OCONEE COUNTY, SOUTH CAROLINA  
PREPARED FOR  
RUSSWOOD OF S.C. INC.

BY  
L. ROBERT KIMBALL  
CONSULTING ENGINEERS  
EBENSBURG, PENNSYLVANIA

JULY, 1971 SHEET 4 OF 4



NOTE: ALL T-AREAS RESERVED BY DEVELOPER  
ALL ROAD RADII 30.0' UNLESS OTHERWISE NOTED.  
LOTS 1790 THRU 1793 HAVE BEEN DELETED  
FROM THIS PLAT.