

FINAL PLAT

SECTION I
TANGLEWOOD

OF
CHICKASAW POINT DEVELOPMENT

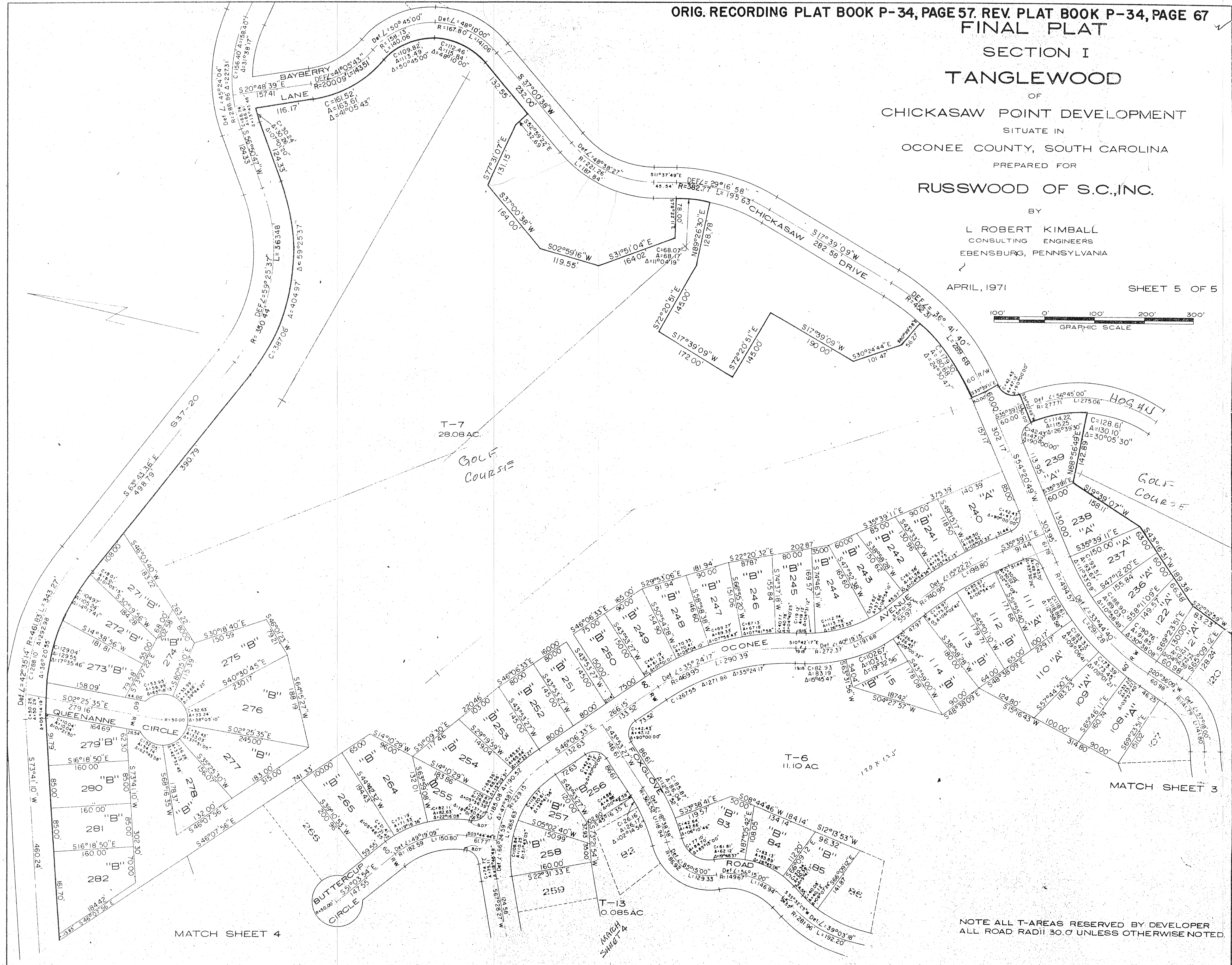
SITUATE IN
OCONEE COUNTY, SOUTH CAROLINA

PREPARED FOR
RUSSWOOD OF S.C., INC.

BY
L ROBERT KIMBALL
CONSULTING ENGINEERS
EBENSBURG, PENNSYLVANIA

APRIL, 1971

SHEET 5 OF 5



MATCH SHEET 4

MATCH SHEET 3

NOTE ALL T-AREAS RESERVED BY DEVELOPER
ALL ROAD RADII 30.0' UNLESS OTHERWISE NOTED