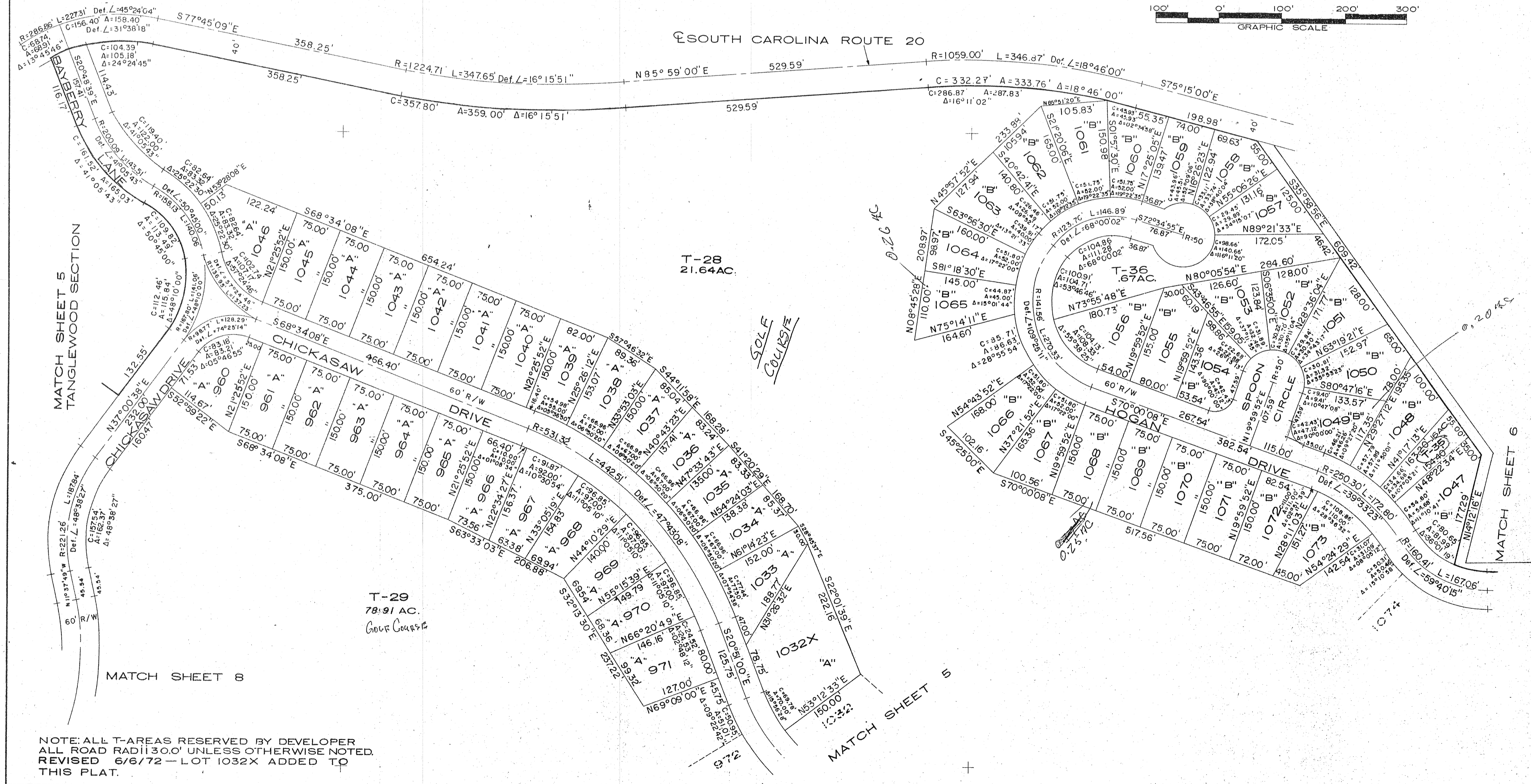
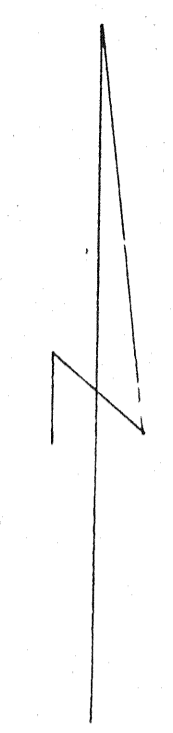
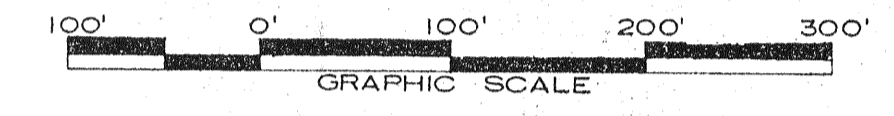


**FINAL PLAT**  
**SECTION 4**  
**BRIARWOOD**  
 OF  
**CHICKASAW POINT DEVELOPMENT**  
 SITUATE IN  
 OCONEE COUNTY, SOUTH CAROLINA  
 PREPARED FOR  
**RUSSWOOD OF S.C. INC.**  
 BY  
**L. ROBERT KIMBALL**  
 CONSULTING ENGINEERS  
 EBENSBURG, PENNSYLVANIA

AUGUST, 1971

SHEET 7 OF 8



NOTE: ALL T-AREAS RESERVED BY DEVELOPER  
 ALL ROAD RADII 30.0' UNLESS OTHERWISE NOTED.  
 REVISED 6/6/72 - LOT 1032X ADDED TO  
 THIS PLAT.