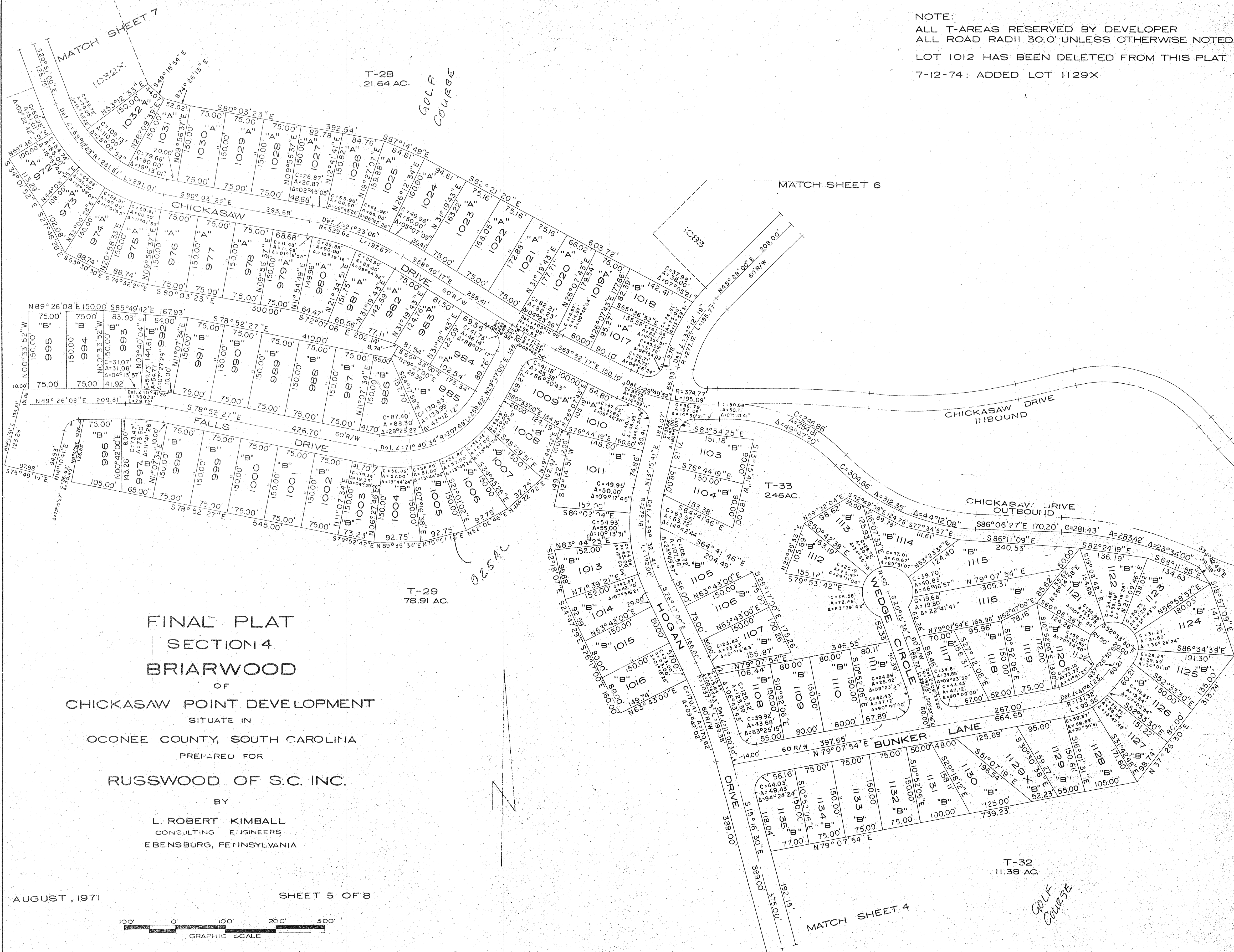


NOTE:
ALL T-AREAS RESERVED BY DEVELOPER
ALL ROAD RADII 30.0' UNLESS OTHERWISE NOTED
LOT 1012 HAS BEEN DELETED FROM THIS PLAT.
7-12-74: ADDED LOT 1129X



FINAL PLAT
SECTION 4
BRIARWOOD
OF
CHICKASAW POINT DEVELOPMENT
SITUATE IN
OCONEE COUNTY, SOUTH CAROLINA
PREPARED FOR
RUSSWOOD OF S.C. INC.
BY
L. ROBERT KIMBALL
CONSULTING ENGINEERS
EBENSBURG, PENNSYLVANIA

AUGUST, 1971 SHEET 5 OF 8
100' 0' 100' 200' 300'
GRAPHIC SCALE