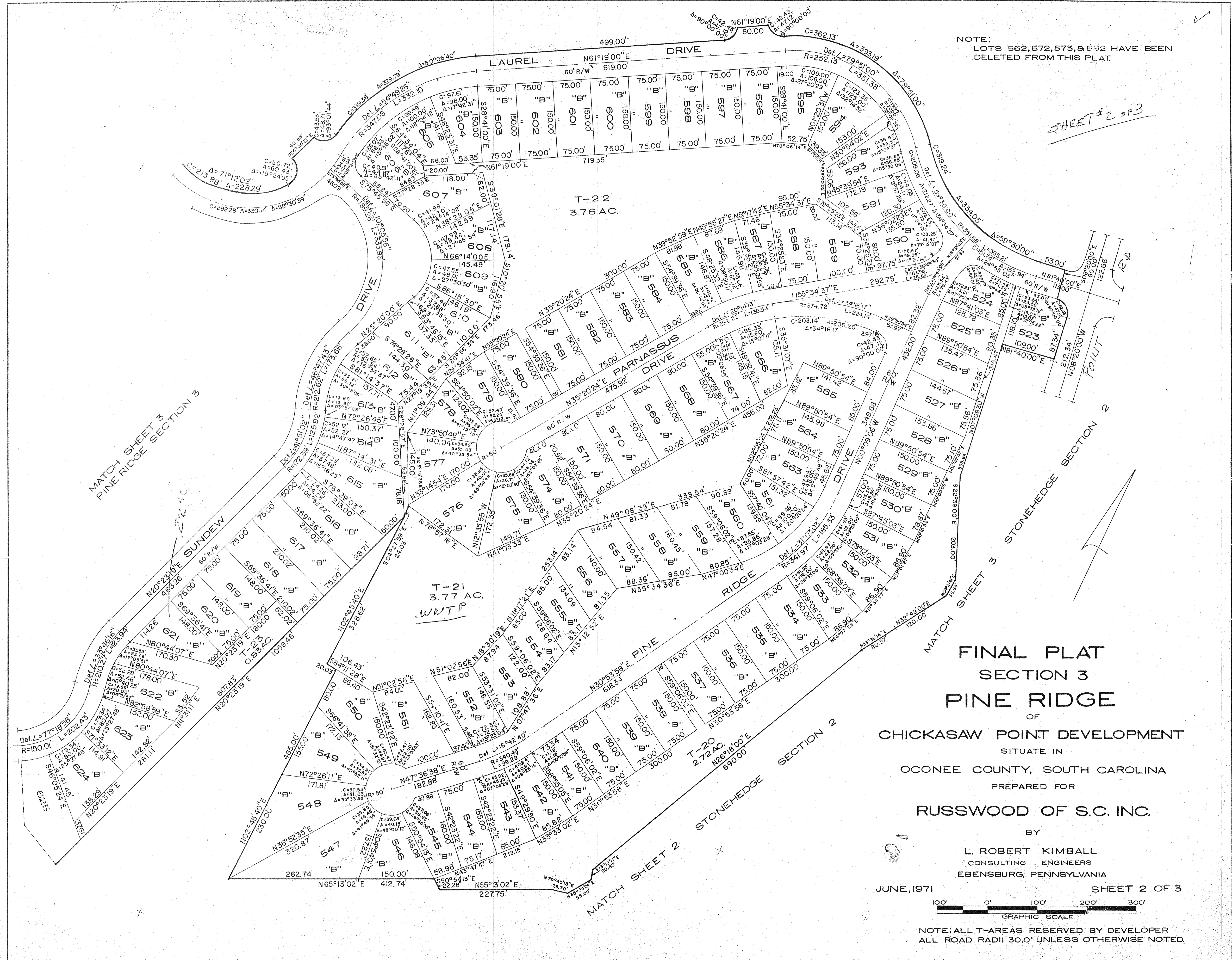


NOTE:
LOTS 562, 572, 573, & 592 HAVE BEEN
DELETED FROM THIS PLAT.

SHEET # 2 OF 3



MATCH SHEET 3
PINE RIDGE SECTION 3

FINAL PLAT
SECTION 3
PINE RIDGE

OF
CHICKASAW POINT DEVELOPMENT

SITUATE IN
OCONEE COUNTY, SOUTH CAROLINA

PREPARED FOR

RUSSWOOD OF S.C. INC.

BY
L. ROBERT KIMBALL
CONSULTING ENGINEERS
EBENSBURG, PENNSYLVANIA

JUNE, 1971

SHEET 2 OF 3



NOTE: ALL T-AREAS RESERVED BY DEVELOPER
ALL ROAD RADII 30.0' UNLESS OTHERWISE NOTED.