

FINAL PLAT
SECTION 2
STONEHEDGE

OF
CHICKASAW POINT DEVELOPMENT

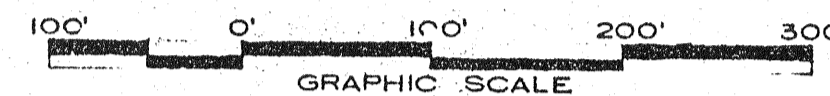
SITUATE IN
OCONEE COUNTY, SOUTH CAROLINA

PREPARED FOR
RUSSWOOD OF S.C. INC.

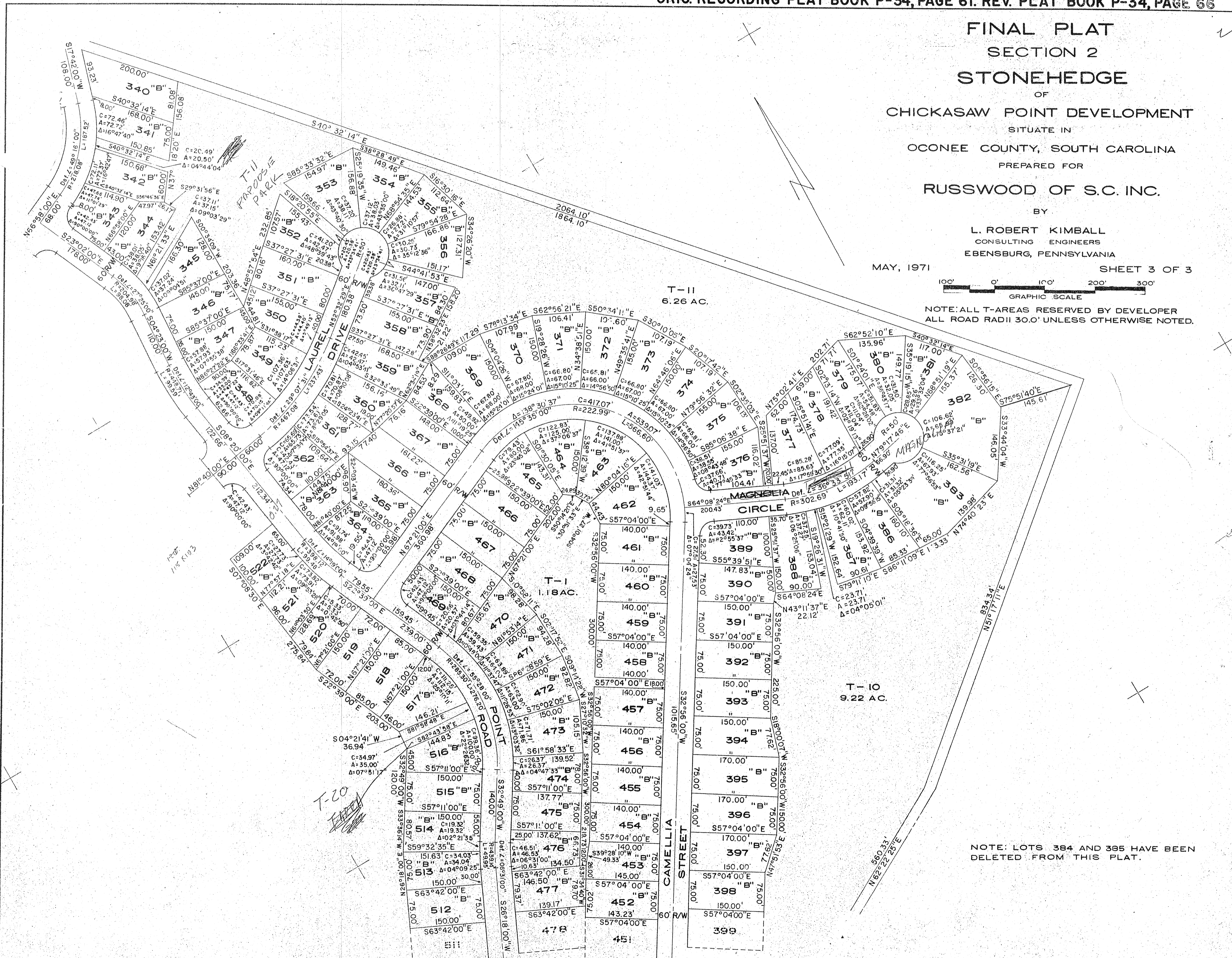
BY
L. ROBERT KIMBALL
CONSULTING ENGINEERS
EBENSBURG, PENNSYLVANIA

MAY, 1971

SHEET 3 OF 3



NOTE: ALL T-AREAS RESERVED BY DEVELOPER
ALL ROAD RADII 30.0' UNLESS OTHERWISE NOTED.



NOTE: LOTS 384 AND 385 HAVE BEEN
DELETED FROM THIS PLAT.