

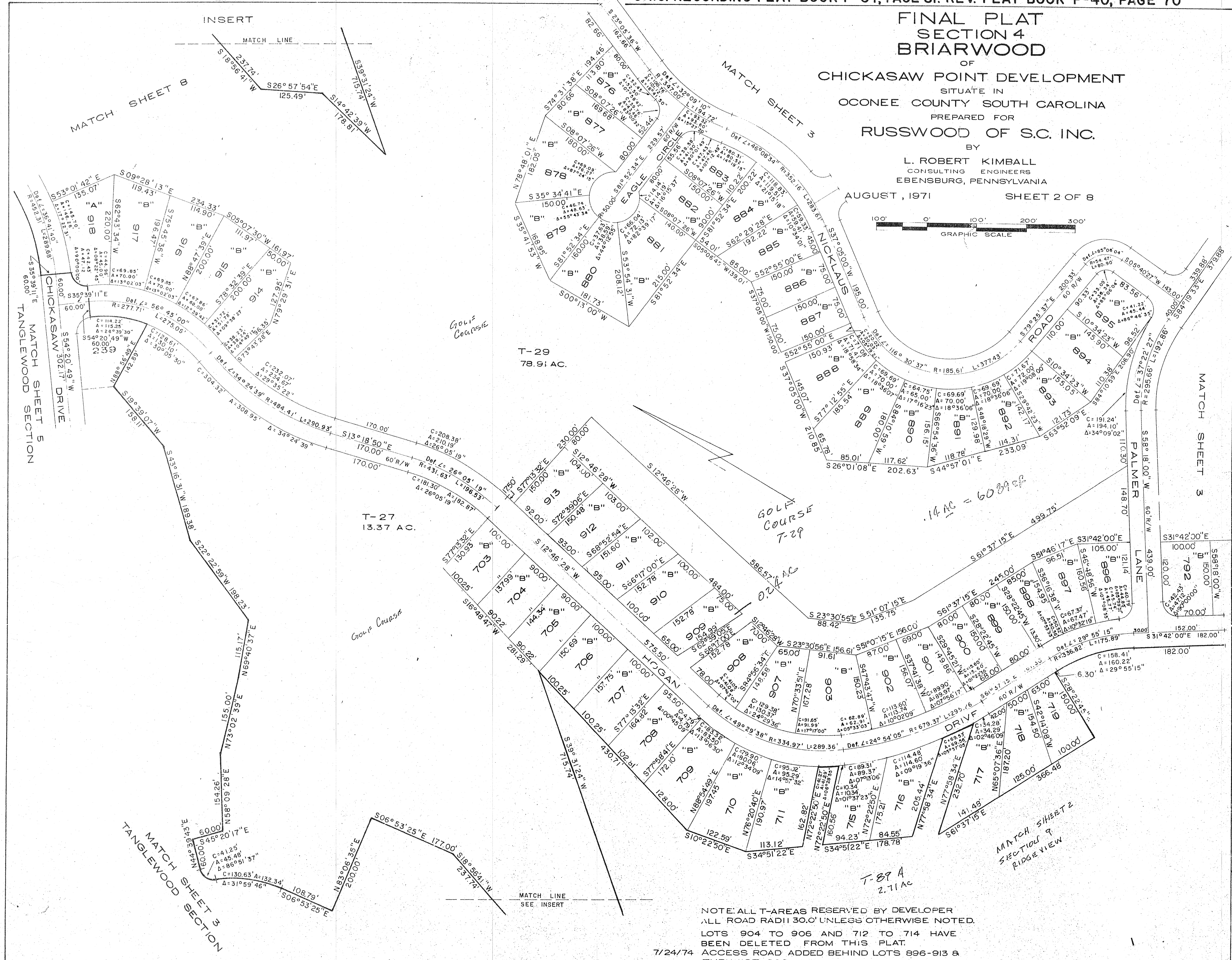
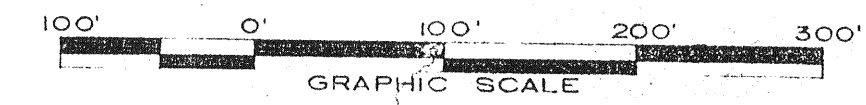
FINAL PLAT SECTION 4 BRIARWOOD OF CHICKASAW POINT DEVELOPMENT

SITUATE IN OCONEE COUNTY SOUTH CAROLINA

PREPARED FOR RUSSWOOD OF S.C. INC.

BY L. ROBERT KIMBALL CONSULTING ENGINEERS EBENSBURG, PENNSYLVANIA

AUGUST, 1971 SHEET 2 OF 8



NOTE: ALL T-AREAS RESERVED BY DEVELOPER ALL ROAD RADII 30.0' UNLESS OTHERWISE NOTED. LOTS 904 TO 906 AND 712 TO 714 HAVE BEEN DELETED FROM THIS PLAT. ACCESS ROAD ADDED BEHIND LOTS 896-913 & THRU LOT 909

7/24/74