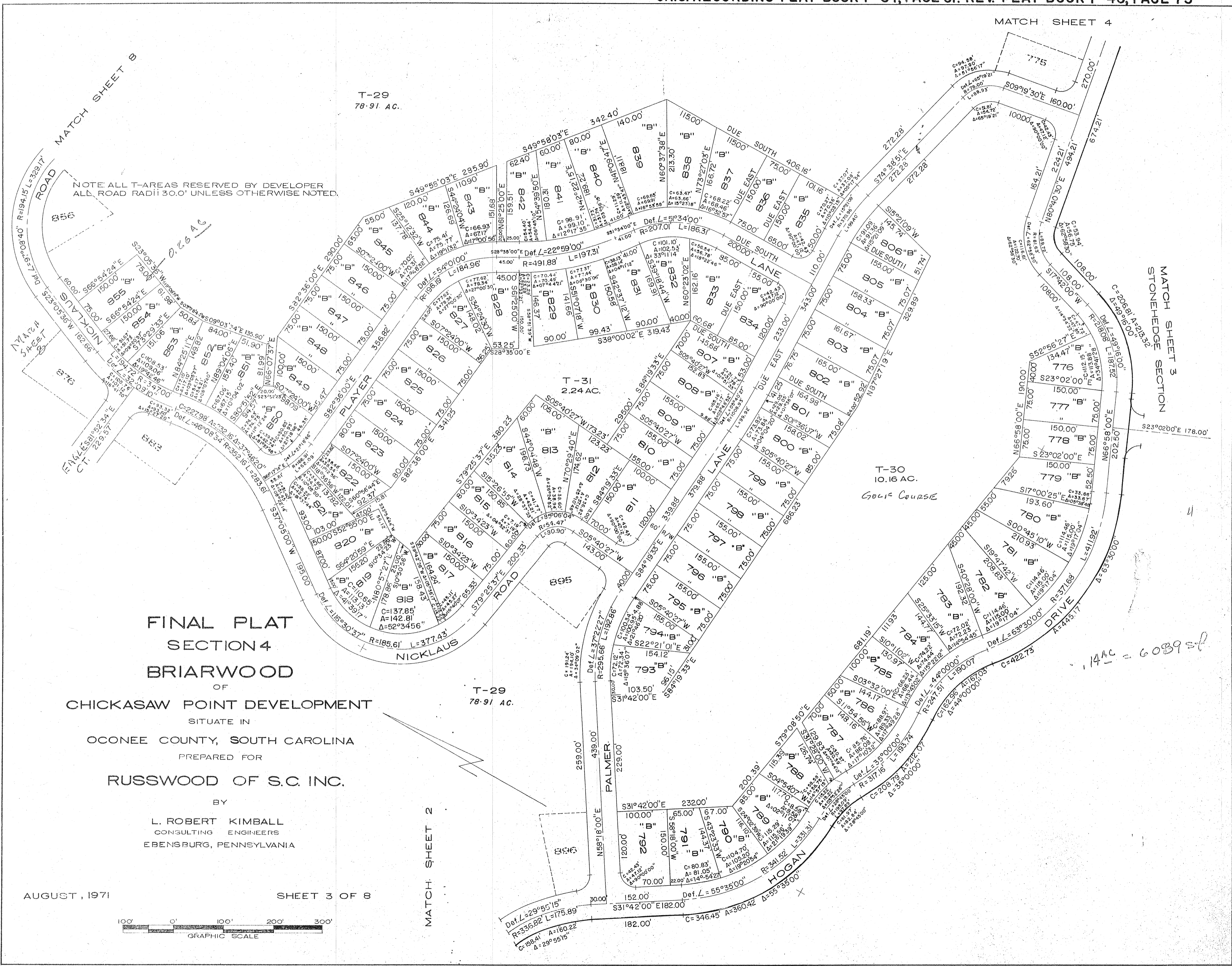


MATCH SHEET 4

MATCH SHEET 8

T-29  
78.91 AC.

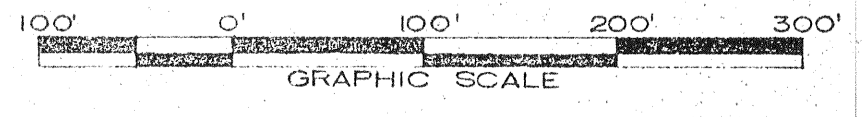
NOTE ALL T-AREAS RESERVED BY DEVELOPER  
ALL ROAD RADII 30.0' UNLESS OTHERWISE NOTED.



**FINAL PLAT**  
**SECTION 4**  
**BRIARWOOD**  
 OF  
**CHICKASAW POINT DEVELOPMENT**  
 SITUATE IN  
 OCONEE COUNTY, SOUTH CAROLINA  
 PREPARED FOR  
**RUSSWOOD OF S.C. INC.**  
 BY  
**L. ROBERT KIMBALL**  
 CONSULTING ENGINEERS  
 EBENSBURG, PENNSYLVANIA

AUGUST, 1971

SHEET 3 OF 8



MATCH SHEET 2

MATCH SHEET 3  
STONEHEDGE SECTION

T-30  
10.16 AC.  
GOLF COURSE

T-29  
78.91 AC.

14 AC = 6089 sq ft