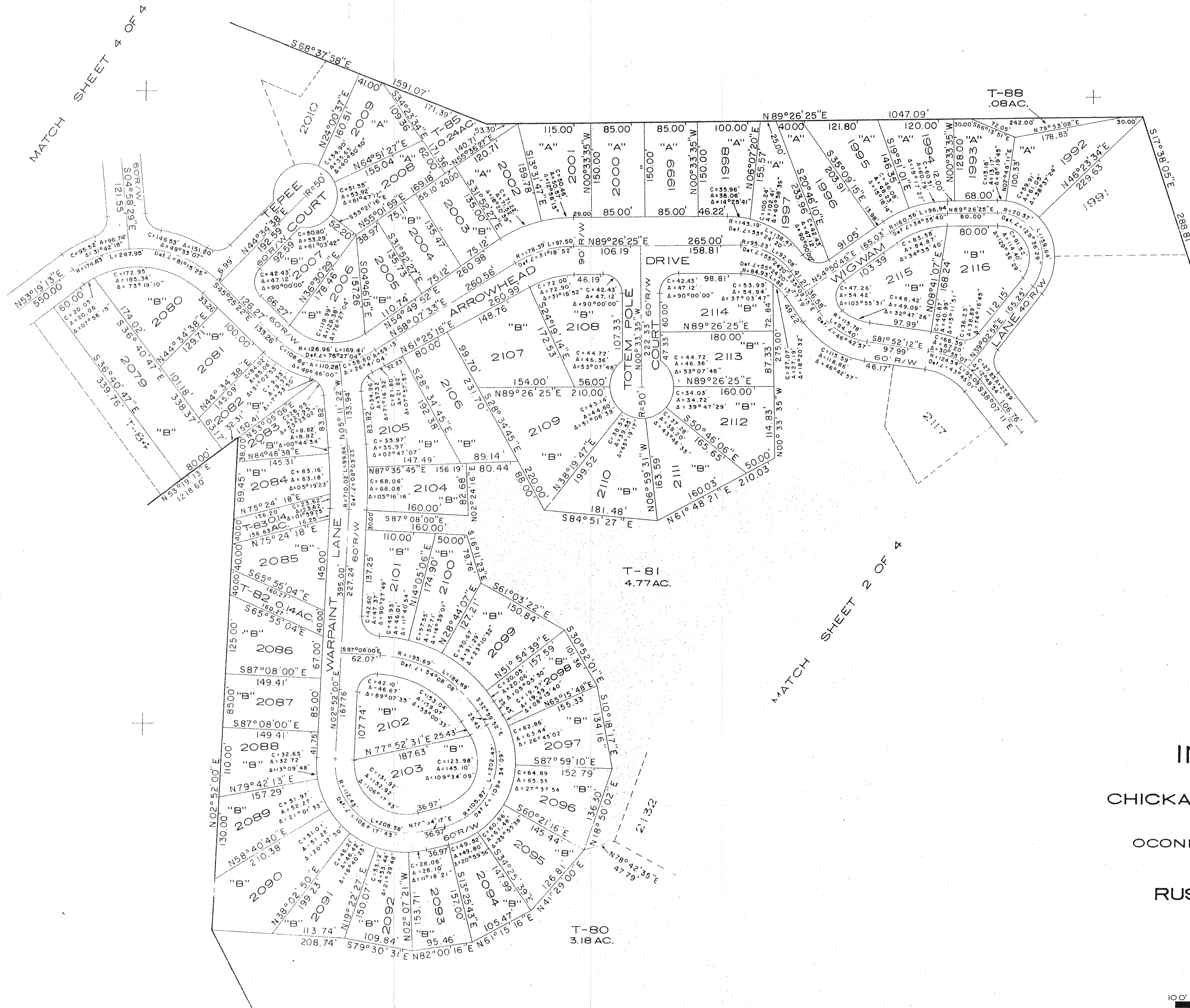


NOTE: ALL T-AREAS RESERVED BY DEVELOPER.  
ALL ROAD RADII 30.0' UNLESS OTHERWISE NOTED.  
REVISED 9/22/72 - LOTS 1992 AND 1993,  
ADDED T-88.

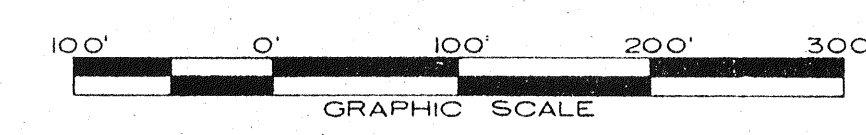


MATCH SHEET 4 OF 4

MATCH SHEET 2 OF 4

FINAL PLAT  
SECTION 8  
INDIAN HILLS  
OF  
CHICKASAW POINT DEVELOPMENT  
SITUATE IN  
OCONEE COUNTY, SOUTH CAROLINA  
PREPARED FOR  
RUSSWOOD OF S.C., INC.

BY  
L. ROBERT KIMBALL  
CONSULTING ENGINEERS  
EBENSBURG, PENNSYLVANIA



SEPTEMBER, 1972

SHEET 3 OF 4